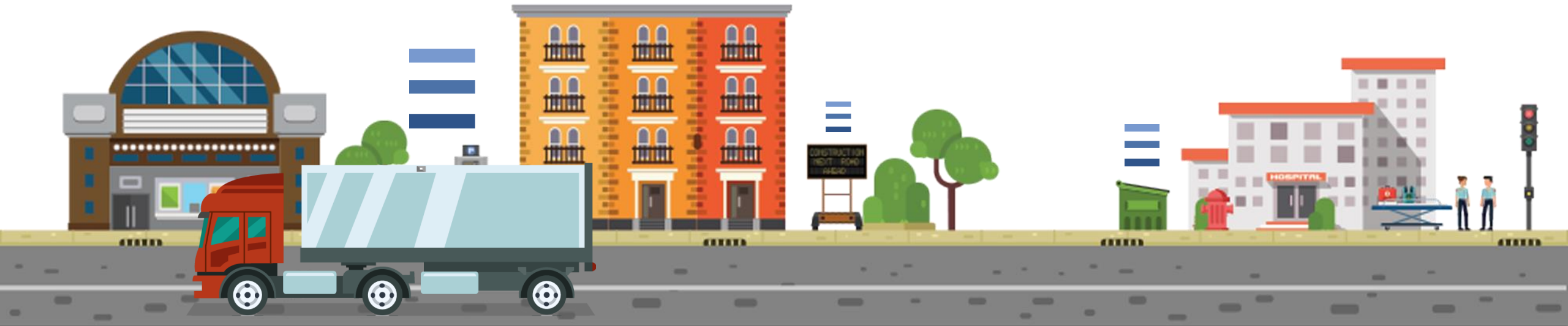


BEWHERE

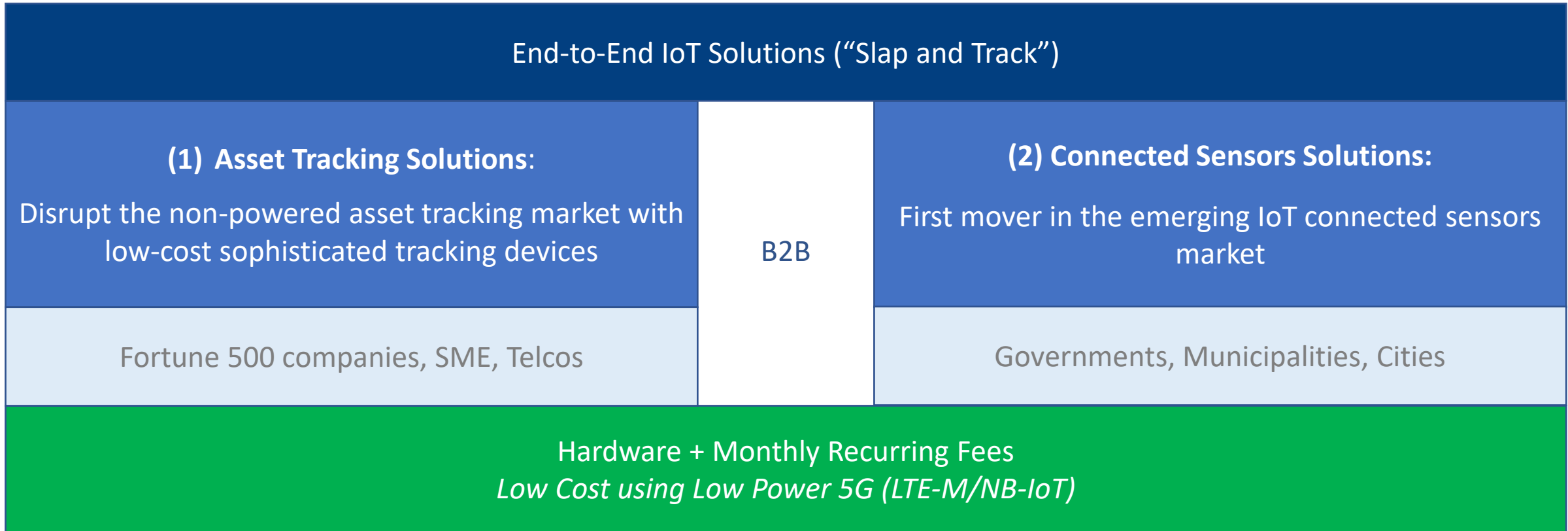
# Working the IoT Value Chain

Investor Presentation | January 2021

TSX-V: BEW, OTCQB: BEWFF



# BeWhere: Our Business Model



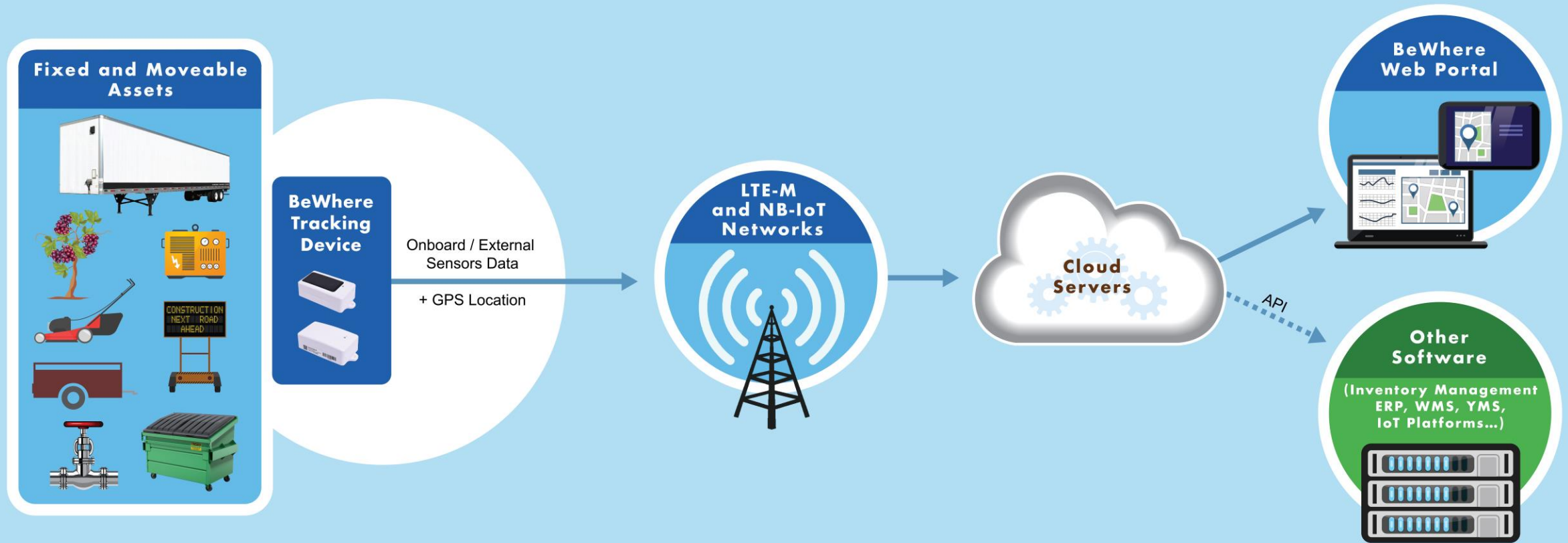
*"Global asset tracking market will reach \$36.3B by 2025, growing at 15% CAGR .*

*IoT supported asset tracking market will account for 95% of all enterprise and industrial solutions.*

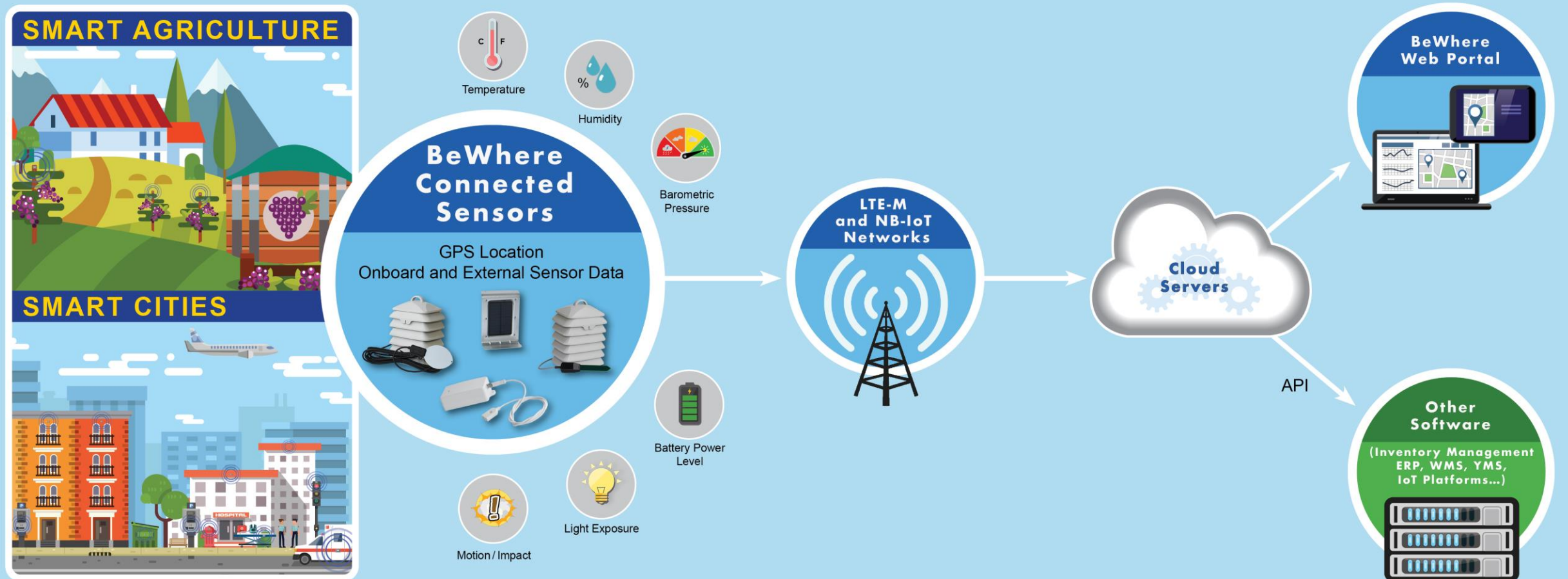
*Asset tracking solutions becoming increasingly viable for sub-\$1,000 book value assets"*

*"Global IoT sensor market expected to reach \$22.48B by 2023, from \$5.28B in 2018, growing at 33.60% CAGR"*

# Solutions Overview: End-to-End Asset Tracking (1)



# Solutions Overview: End-to-End Connected Sensors (2)



# Partners' Marketing

1



**Asset Tracking Fun with the AT1  
– Mason visits Construction Site**  
BeWhere Inc.


[Play](#)



**Providing Project Insight**  
PCL Construction

[Play](#)

[See All Videos of BeWhere in the Field](#)



1-844-944-0824 | [salescoordination@fleetcomplete.com](mailto:salescoordination@fleetcomplete.com)

AT&T Fleet Complete

Solutions

Industries

Customer stories

Blog

Bundles

Partners

Login

English




Visibility:  
Locate and check the status of machinery, tools and toolboxes, cargo and more.

Multi-sensor data:  
Capture and log accurate readings of humidity, temperature, light exposure and impact status.

Latest technology:  
Our trackers run on the LTE-M network and receive automatic software updates over-the-air.

Battery-powered equipment tracking

Features	Details
Small size	At only 4 inches in length and 2 inches in width, AT1 is one of the smallest tracking devices with integrated sensors running on the LTE-M network.
Long-lasting battery	Compact 3.6V battery is powered to provide over 3000 for AT1 and 2200 for AT1 Solar location pings monitoring your assets for years to come.
Track any asset	With a choice of either a double-sided tape or 2 screws, the device installs on virtually any outdoor asset, such as equipment, tools and toolboxes, cargo, and more.
Multi-sensor data	AT1 captures GPS location, humidity, temperature, light exposure and impact status of assets at regular intervals, alerting you to any irregularity or activity.
Suited for any industry	Whether you lease construction equipment, do contracting jobs, manage a yard of trailers, or supervise EMS equipment handling, AT1 helps ensure your equipment is safe, sound and where it needs to be.
AT1 Solar Rechargeable Battery	The device recharges the battery when exposed to direct sunlight. 35-50 hours until full recharge.





BEWHERE

# Use Cases

## Resellers/Partners:

Bell  
AT&T  
T-Mobile  
Tenna  
FleetComplete  
Geotab  
SecureQuip  
...

## End users:

Trailers  
Transportation  
Construction  
Logistics  
Supply Chain  
Governments  
(Smart Cities)  
...



Trailers/Dry vans



Generators



Flatbeds/Chassis



Construction trailers



Yellow iron /Construction equipment



Portable toilets



Industrial garbage containers



Shipping boxes and containers



Railcar



Digital signs



Agritech



Livestock transportation



# Solving Problems for our Customers (Asset Tracking)

*Disruptive*





# Solving Problems for our Customers (Connected Sensors)

*Greenfield*

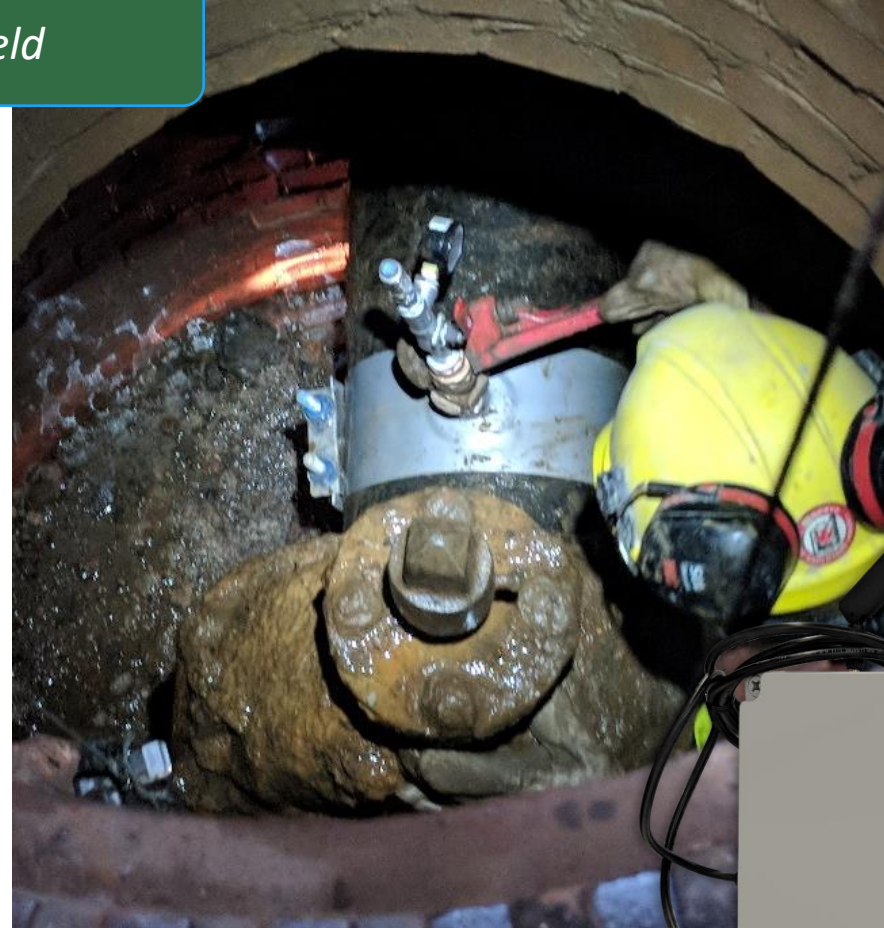


**Toronto Forestry** @TOtrees · Sep 14, 2020

Urban Forestry's Commercial Tree Watering Program is piloting the use of remote sensor technology to improve the efficiency and effectiveness of watering and arboricultural care for trees planted in urban streetscapes. #StreetTrees #UrbanForest

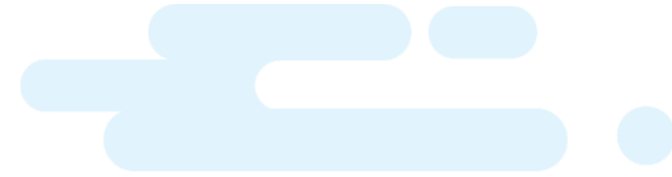
Cellular sensor devices monitor soil moisture in real time, allowing us to adjust our watering operations & ensure trees are getting the water they need.

[toronto.ca/trees](https://toronto.ca/trees)

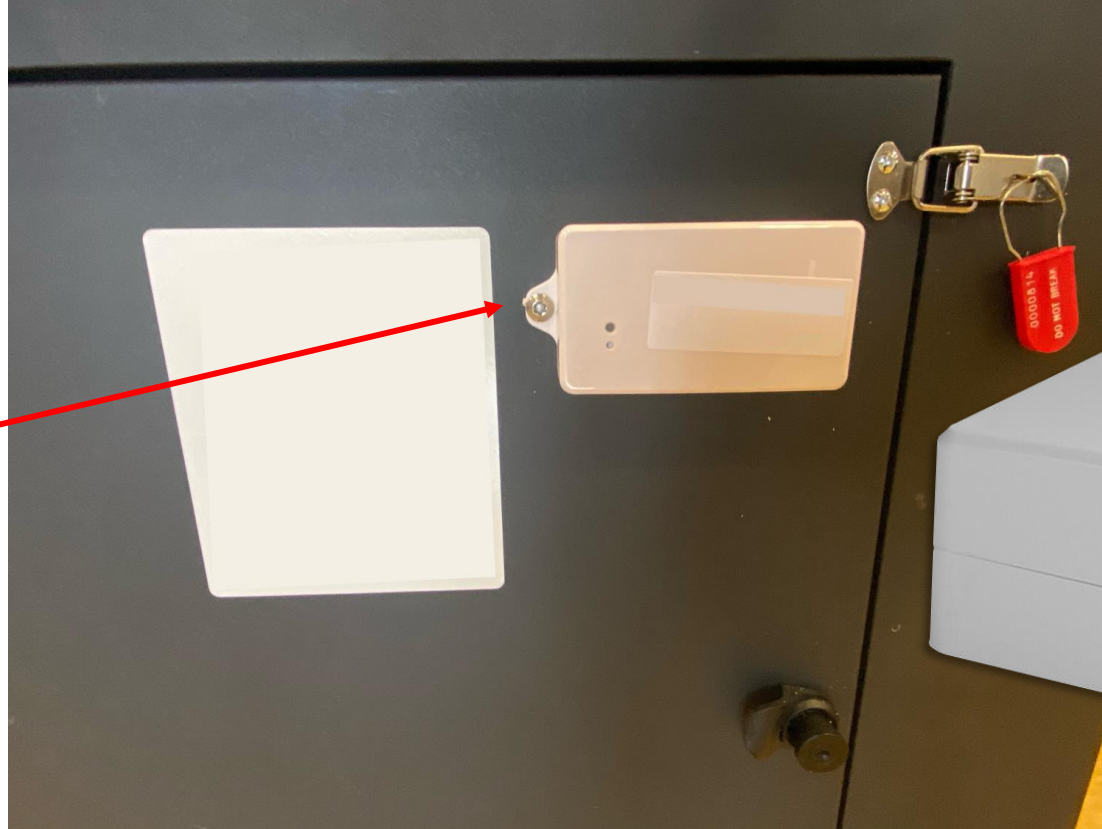
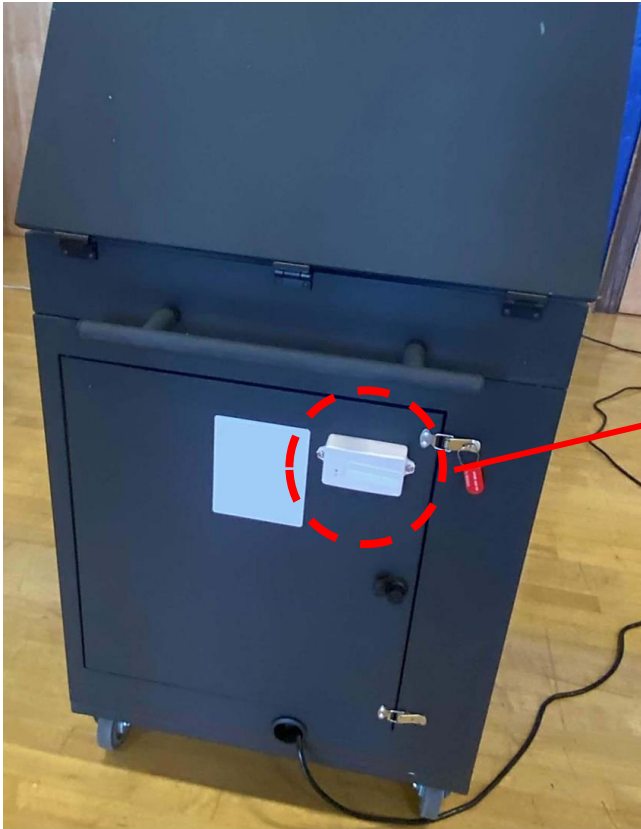




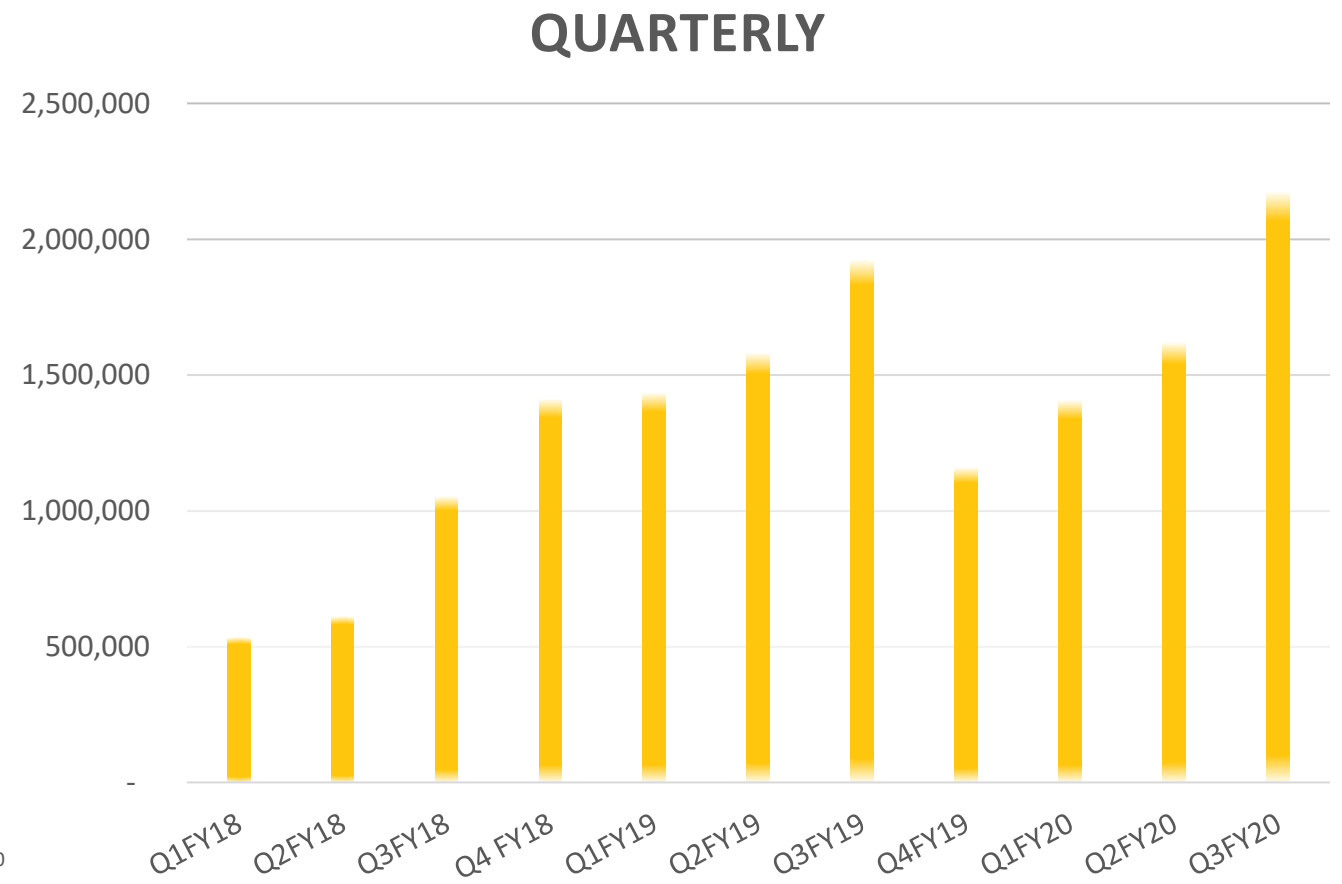
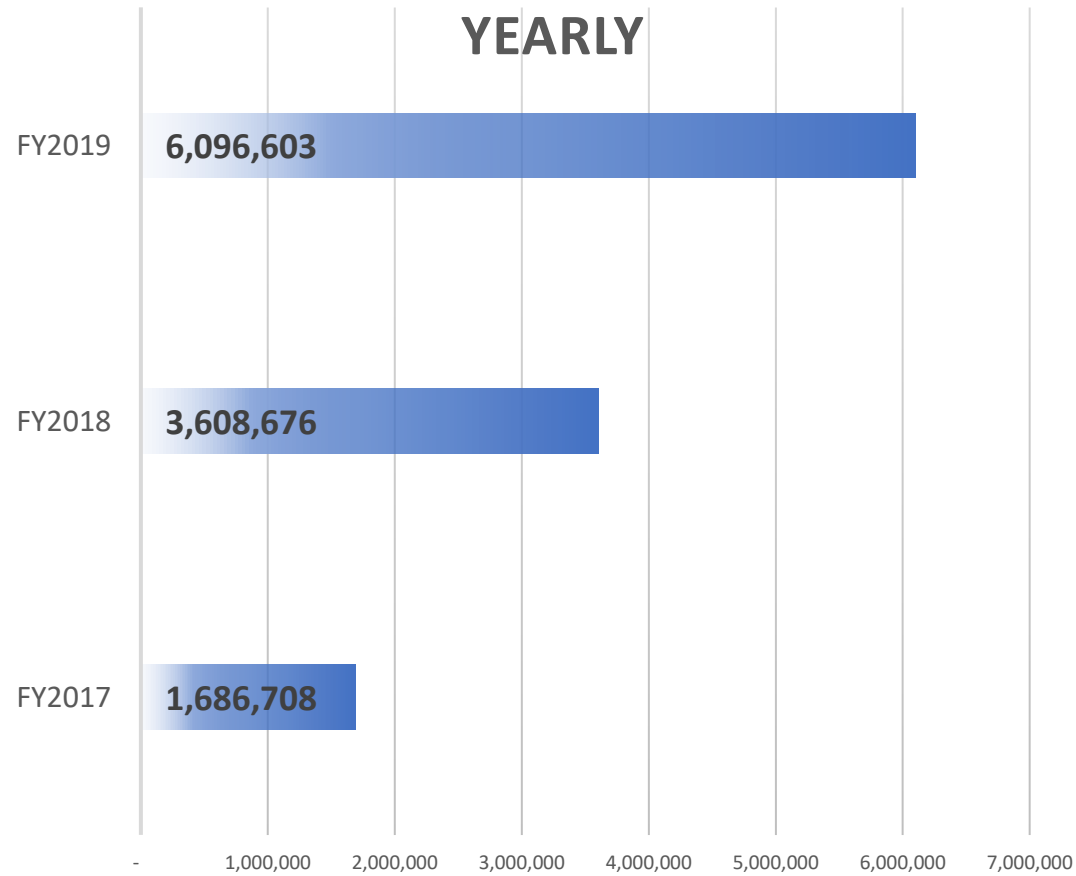
# BeWhere... Everywhere!



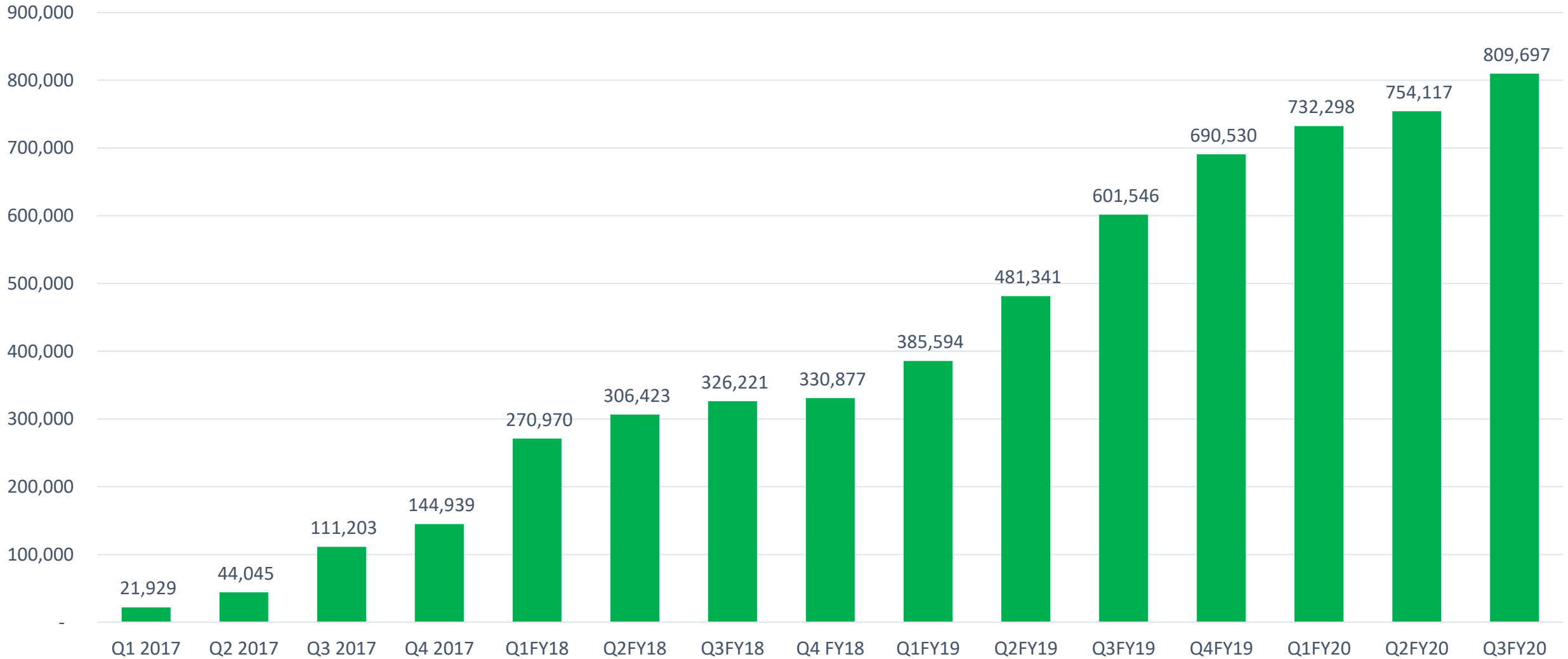
Our BeWhere BeTen was spotted on a poll box by a voter in PA during the US election's day, November 3<sup>rd</sup> 2020



# Revenues Trend

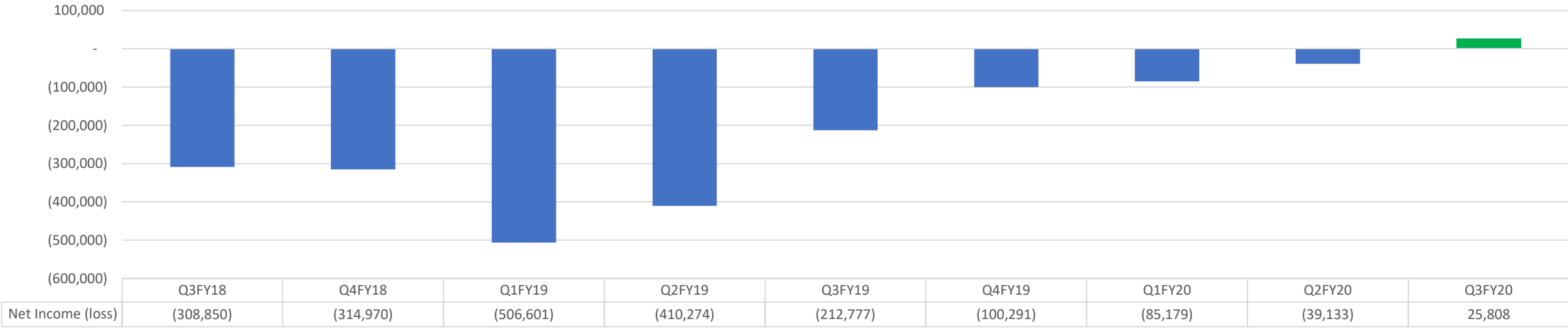
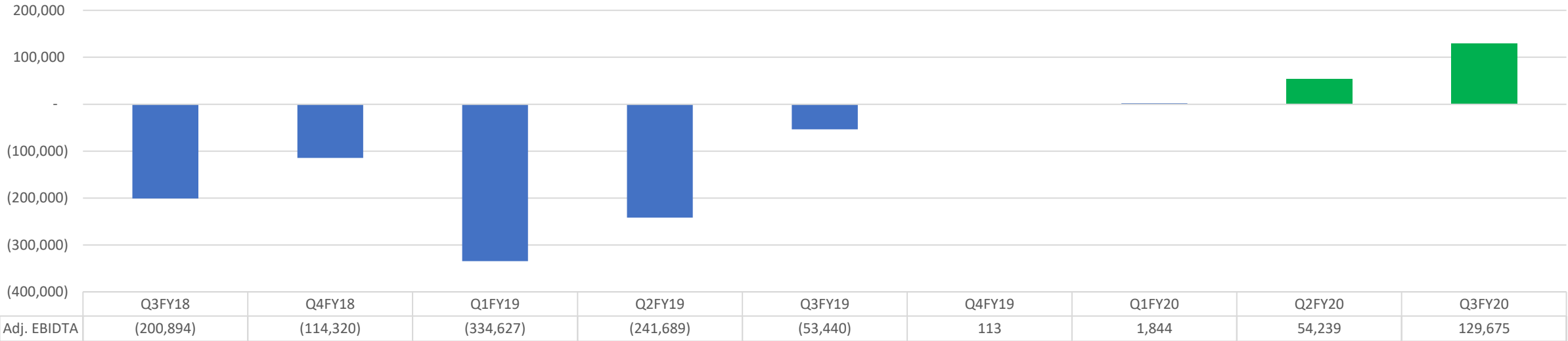
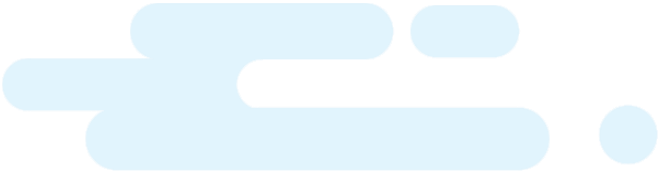


# Recurring Revenue





# Adjusted EBITDA, Net Income



**B=WHERE**

# Business Outlook



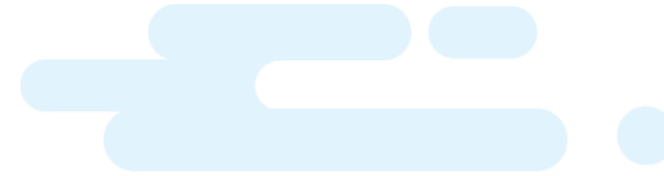
Growing  
Customer  
Base  
(Recurring  
Rev.)

Variants +  
Novel  
Products =  
New Markets  
*B2C*

Growing  
Revenues &  
Profitability



# Cap Structure

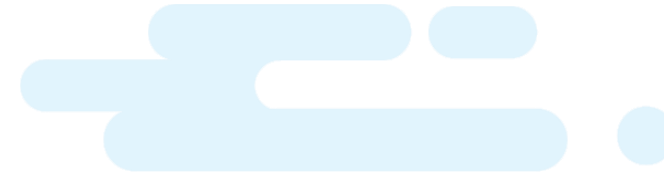


Symbol (TSX.v)	BEW
Price (January 4, 2021)	0.295
Share Issued and Outstanding (M)	87.89
Market Capitalization (M\$)	25.93
Warrants (1) (M)	11.61
Options (M)	3.15
FD Shares Outstanding (M)	102.65
Cash (Q3FY20) (M\$)	2.60
Working Capital (Q3FY20) (M\$)	3.77

*(1) Expiry date and exercise price: Feb. 15, 2024, \$0.35 for 10.6M warrants and \$0.19 for 1M warrants*



# Key Takeaways



Profitability achieved during worldwide pandemic and economical turmoil

Early player in the Mobile IoT = secured partnerships with telcos for new revenue streams (IoT subscriptions); Fortune 500 partners

IoT market growing at exponential rate, commoditization of technology

Greenfield (little existing market with expected high growth) and disruptive (replace traditional tech, allow access to tech)

Flexible (small size, small overhead), quick to innovate, preparing next gen of products when technology is still largely new

Growing recurring revenues, clean balance sheet, positive net income

# Disclaimer

The material in this presentation has been prepared by BeWhere Holdings Inc (“BeWhere” or “the Company”) and is general background information about BeWhere’s activities current as at the date of this presentation. This information is given in summary form and does not purport to be complete.

Information in this presentation, including financial information, should not be considered as advice or a recommendation to investors or potential investors in relation to holding, purchasing or selling securities or other financial products or instruments and does not take into account your particular investment objectives, financial situation or needs. Before acting on any information you should consider the appropriateness of the information having regard to these matters, any relevant offer document and in particular, you should seek independent financial advice. All securities and financial product or instrument transactions involve risks, which include (among others) the risk of adverse or unanticipated market, financial or political developments and, in international transactions, currency risk.

## **Cautionary Statements Regarding Forward Looking Information**

Certain statements in this presentation may constitute forward-looking statements, within the meaning of applicable securities laws. All statements that are not historical facts, including without limitation, statements regarding future estimates, plans, programs, forecasts, projections, objectives, assumptions, expectations or beliefs of future performance, are “forward-looking statements”.

We caution you that such “forward-looking statements” involve known and unknown risks and uncertainties that could cause actual and future events to differ materially from those anticipated in such statements.

Forward-looking statements include, but are not limited to, statements with respect to commercial operations, including technology development, anticipated revenues, projected size of market, and other information that is based on forecasts of future results, estimates of amounts not yet determinable and assumptions of management.

BeWhere Holdings Inc. does not intend, and does not assume any obligation, to update these forward-looking statements except as required by law. These forward-looking statements involve risks and uncertainties relating to, among other things, technology development and marketing activities, the Company’s historical experience with technology development, uninsured risks. Actual results may differ materially from those expressed or implied by such forward-looking statements.

# BEWHERE

[www.BeWhere.com](http://www.BeWhere.com)