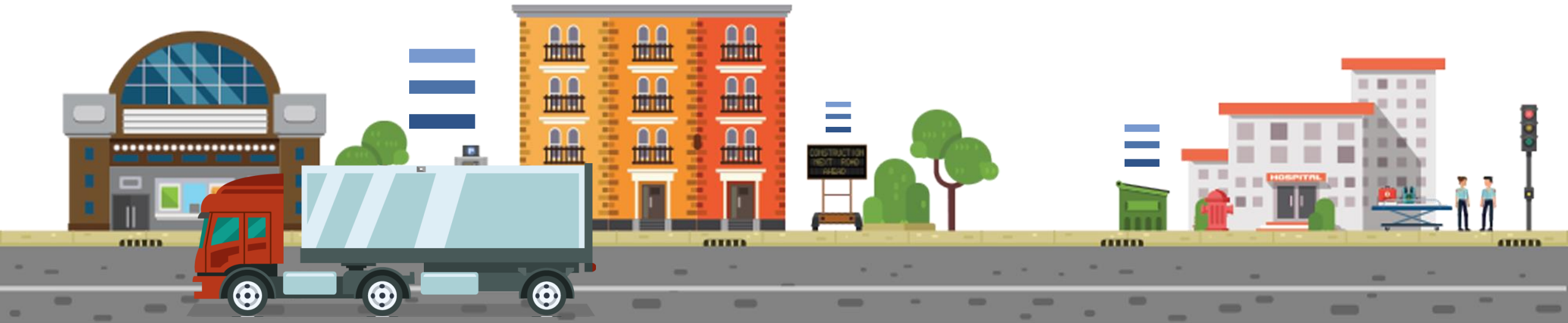


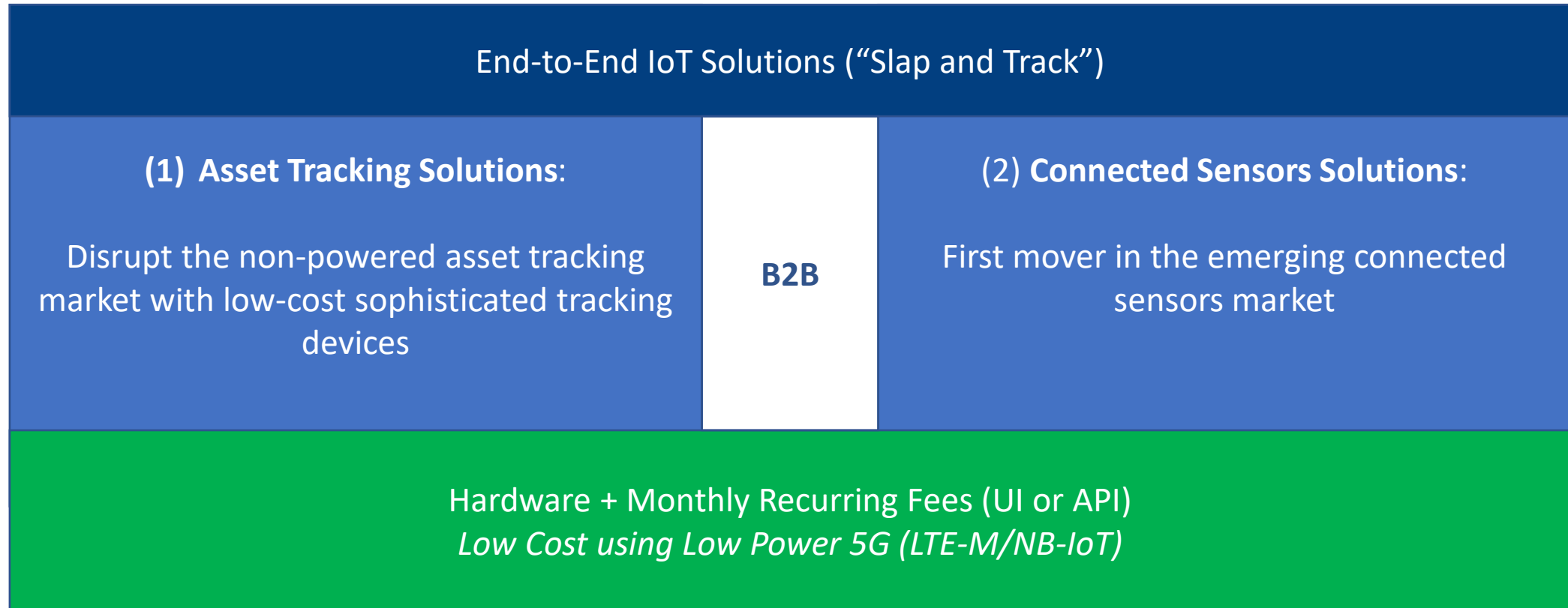
BEWHERE

AGM

August 6, 2020 – 2PM



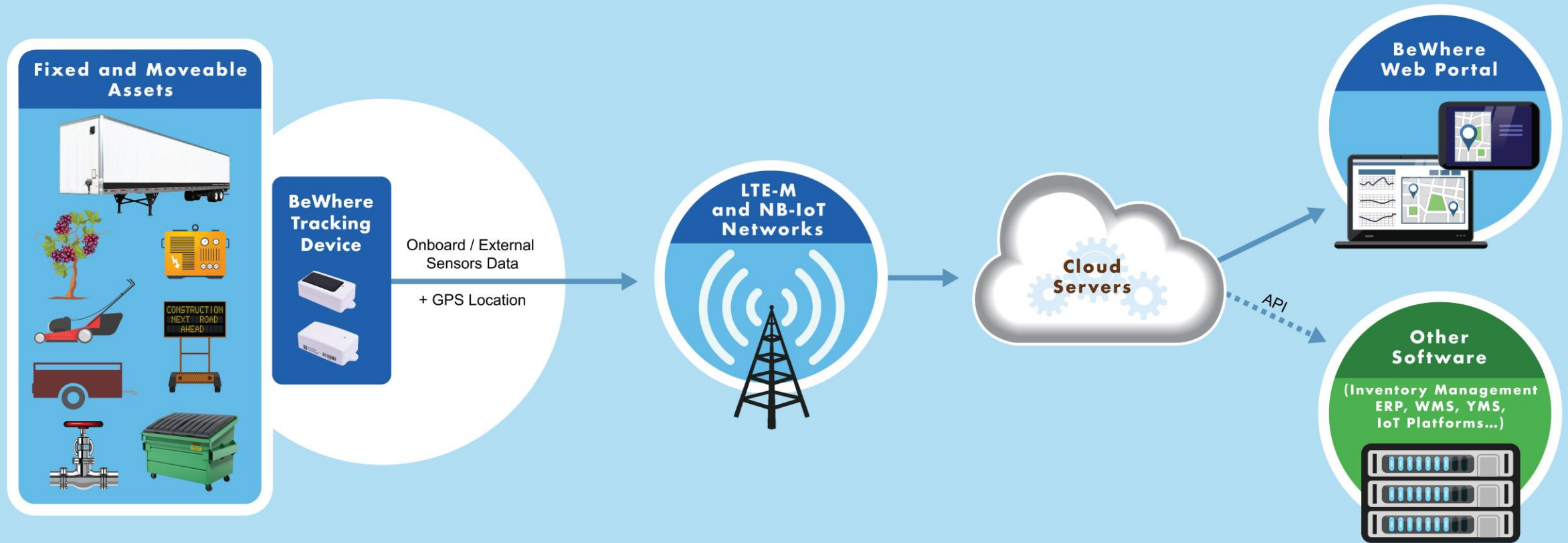
BeWhere: Our Business Model



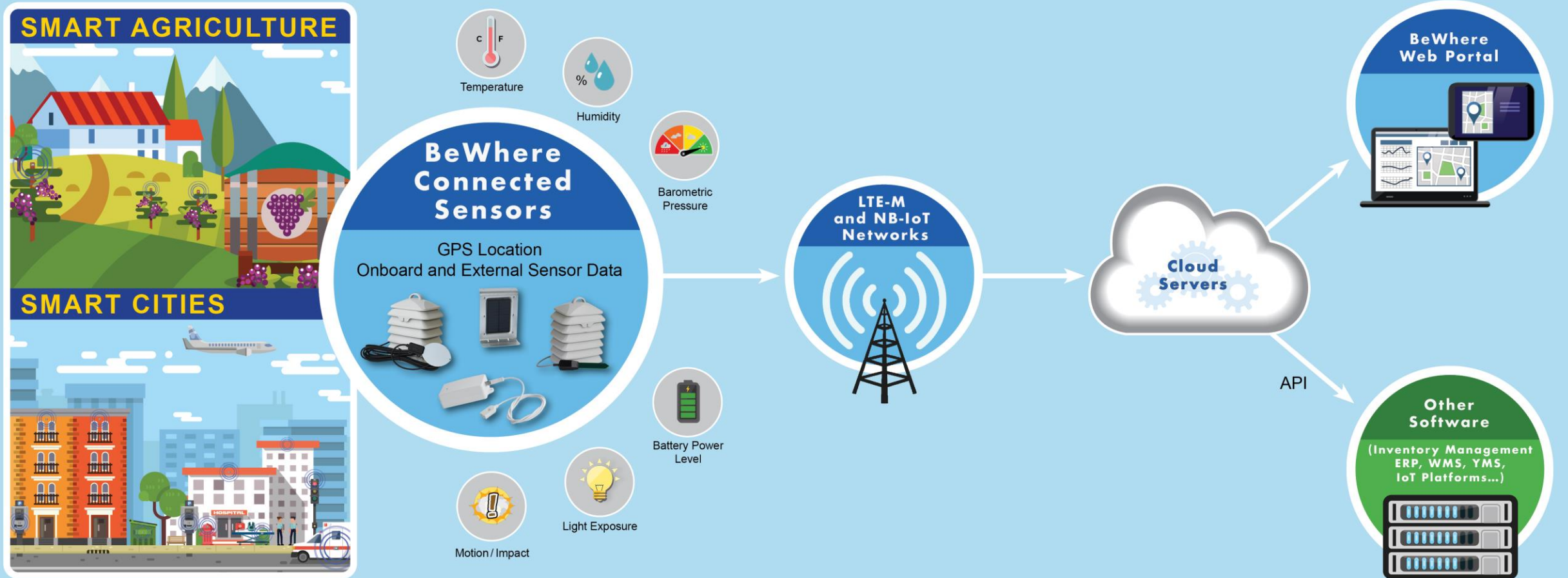
“Global asset tracking market will reach \$32.0B by 2024, growing at 14.9% CAGR”

“Global IoT sensor market expected to reach \$22.48B by 2023, from \$5.28B in 2018, growing at 33.60% CAGR”

Solutions Overview: End-to-End Asset Tracking (1)



Solutions Overview: End-to-End Connected Sensors (2)



Use Cases

Resellers/Partners:

- Bell
- AT&T
- T-Mobile
- FleetComplete
- Tenna
- Geotab
- SecureQuip
- ...

End users:

- Trailers
- Transportation
- Construction
- Logistics
- Supply Chain
- Governments
- (Smart Cities)
- ...



Trailers/Dry vans



Generators



Flatbeds/Chassis



Construction trailers



Yellow iron /Construction equipment



Portable toilets



Industrial garbage containers



Shipping boxes and containers



Railcar



Digital signs



Agritech



Livestock transportation



Partners' Marketing

1



**Asset Tracking Fun with the AT1
- Mason visits Construction Site**

[Play](#)

BeWhere Inc.

1:40

▶



Providing Project Insight

[Play](#)

PCL Construction

2:25

[See All Videos of BeWhere in the Field](#)

AT&T Business 1-844-944-0824 salescoordination@fleetcomplete.com

AT&T Fleet Complete Solutions Industries Customer stories Blog Bundles Partners Login English

Visibility: Locate and check the status of machinery, tools and toolboxes, cargo and more.

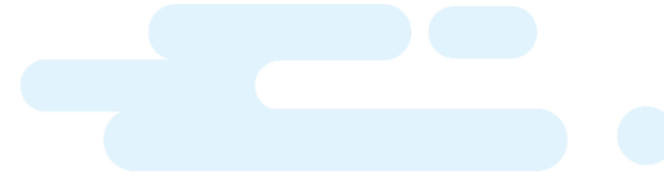
Multi-sensor data: Capture and log accurate readings of humidity, temperature, light exposure and impact status.

Latest technology: Our trackers run on the LTE-M network and receive automatic software updates over-the-air.

Battery-powered equipment tracking

Features	Details
Small size	At only 4 inches in length and 2 inches in width, AT1 is one of the smallest tracking devices with integrated sensors running on the LTE-M network.
Long-lasting battery	Compact 3.6V battery is powered to provide over 3000 for AT1 and 2200 for AT1 Solar location pings monitoring your assets for years to come.
Track any asset	With a choice of either a double-sided tape or 2 screws, the device installs on virtually any outdoor asset, such as equipment, tools and toolboxes, cargo, and more.
Multi-sensor data	AT1 captures GPS location, humidity, temperature, light exposure and impact status of assets at regular intervals, alerting you to any irregularity or activity.
Suited for any industry	Whether you lease construction equipment, do contracting jobs, manage a yard of trailers, or supervise EMS equipment handling, AT1 helps ensure your equipment is safe, sound and where it needs to be.
AT1 Solar Rechargeable Battery	The device recharges the battery when exposed to direct sunlight. 35-50 hours until full recharge.

Cap Structure

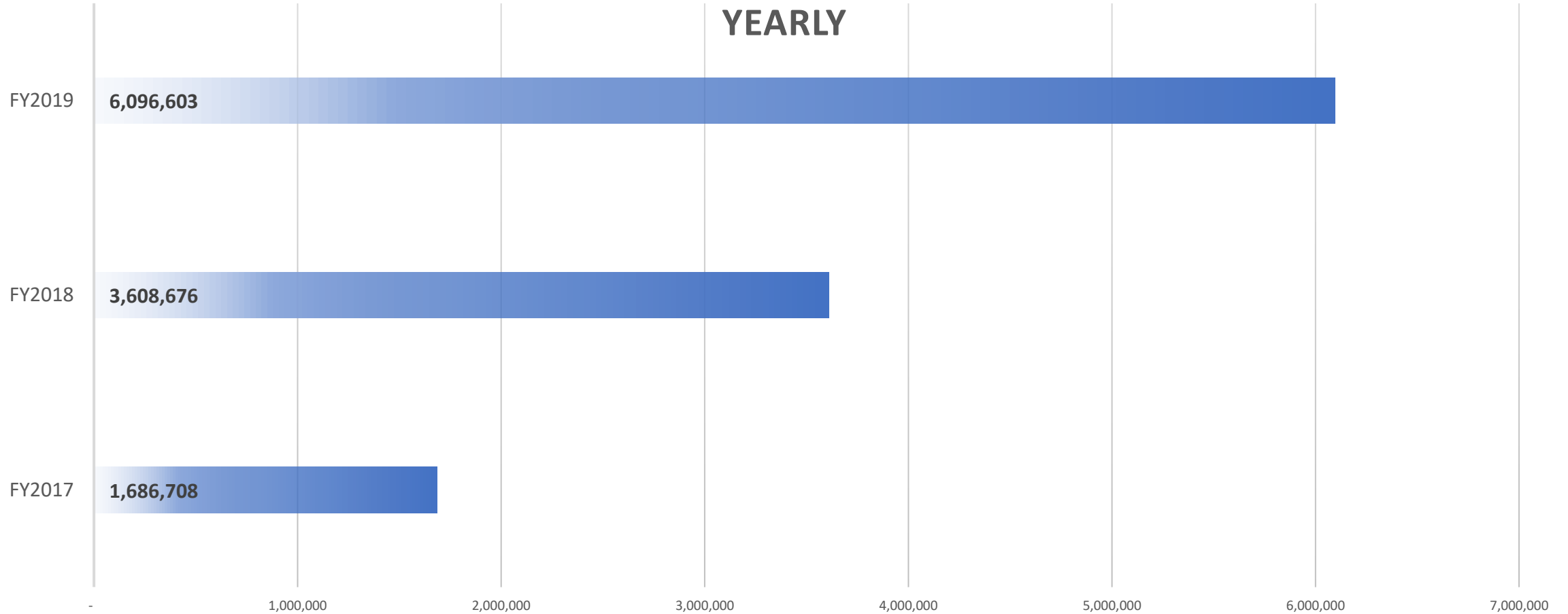
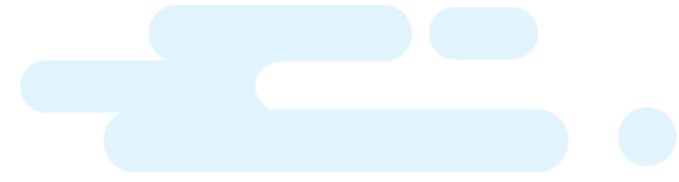


Symbol (TSX.v)	BEW
Price (July 31, 2020)	0.13
Share Issued and Outstanding (M)	87.89
Market Capitalization (M\$)	11.43
Warrants (1) (M)	11.61
Options (M)	2.80
FD Shares Outstanding (M)	102.30
Cash (Q1FY20) (M\$)	2.36
Working Capital (Q1FY20) (M\$)	3.99

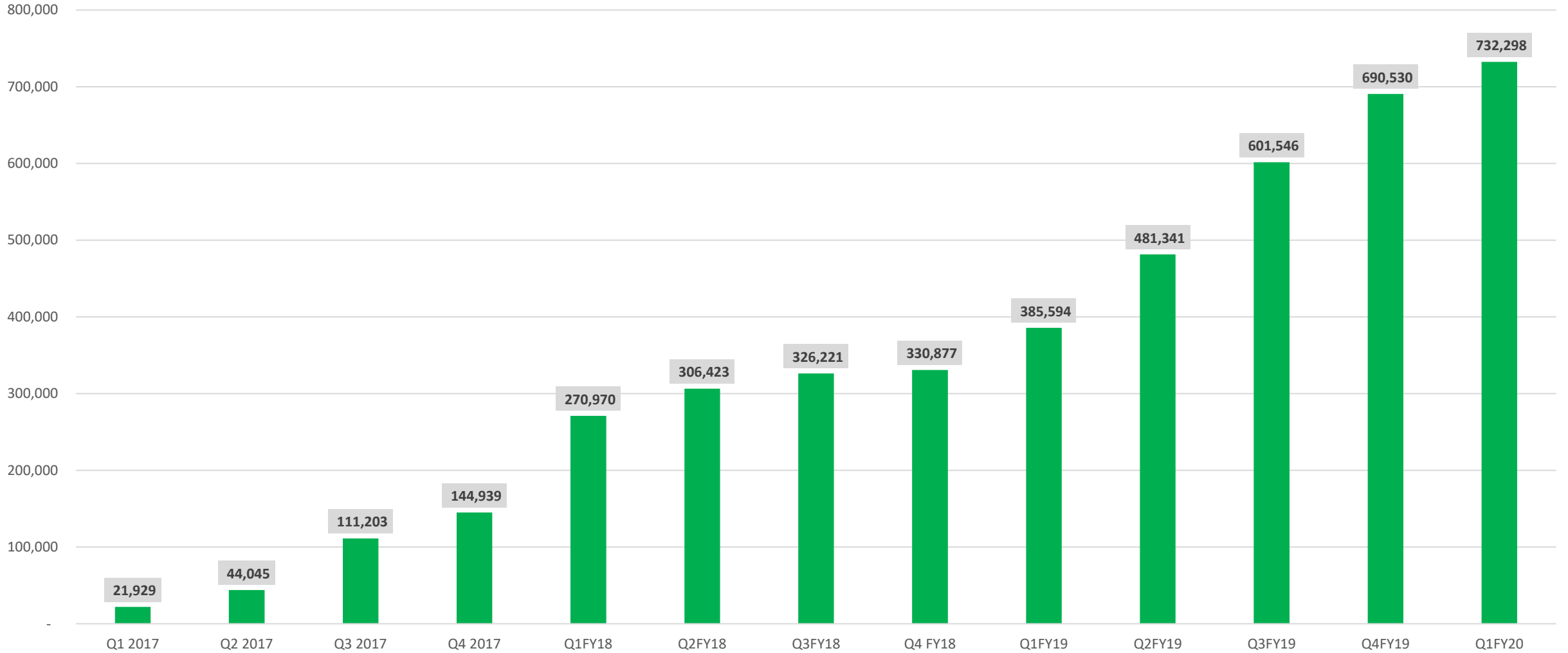
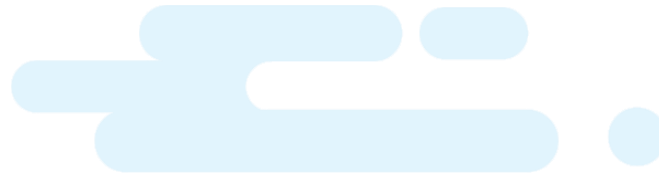
(1) Expiry date and exercise price: Feb. 15, 2024, \$0.35 for 10.6M warrants and \$0.19 for 1M warrants



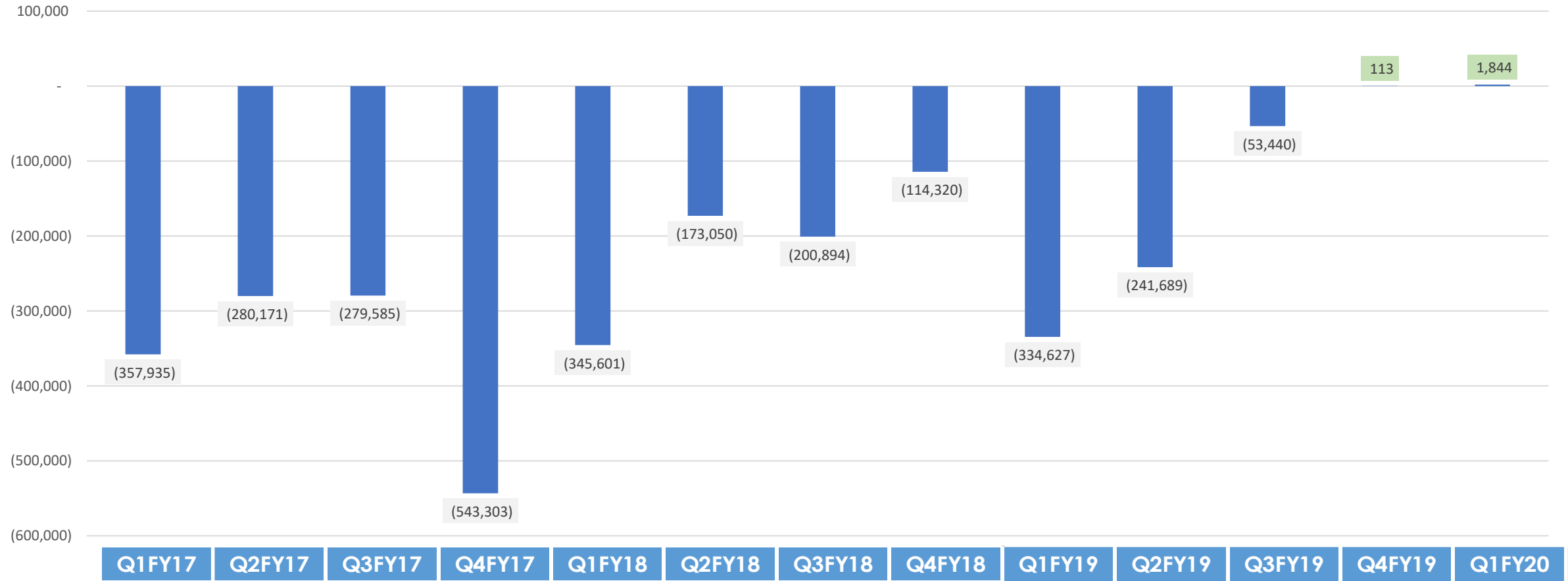
Revenues Trend



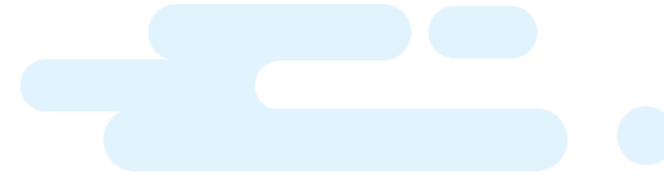
Recurring Revenue



Adjusted EBITDA



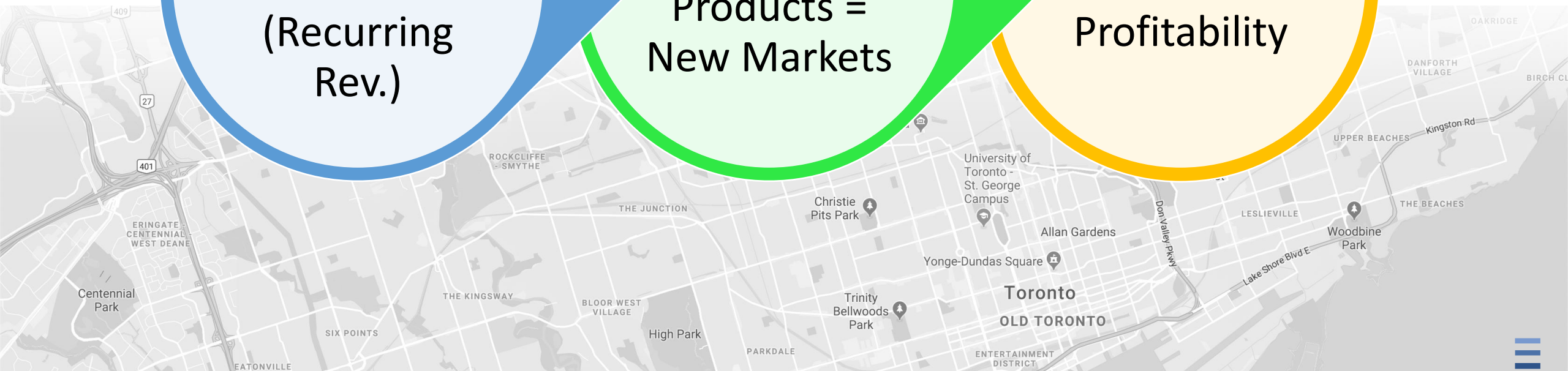
Business Outlook



Growing Customer Base (Recurring Rev.)

Upcoming Novel Products = New Markets

Growing Revenues & Profitability



BEWHERERE

www.BeWhere.com